



Spanish old-growth forests: some examples of initiatives for OGF protection: networks at 4 different spatial level

O. Schwendtner

Bioma Forestal



WILD EUROPE / EU Committee of the Regions

Conference for protection of old growth forests in Europe

13th to 14th sept. Brussels

1.- INTRODUCTION

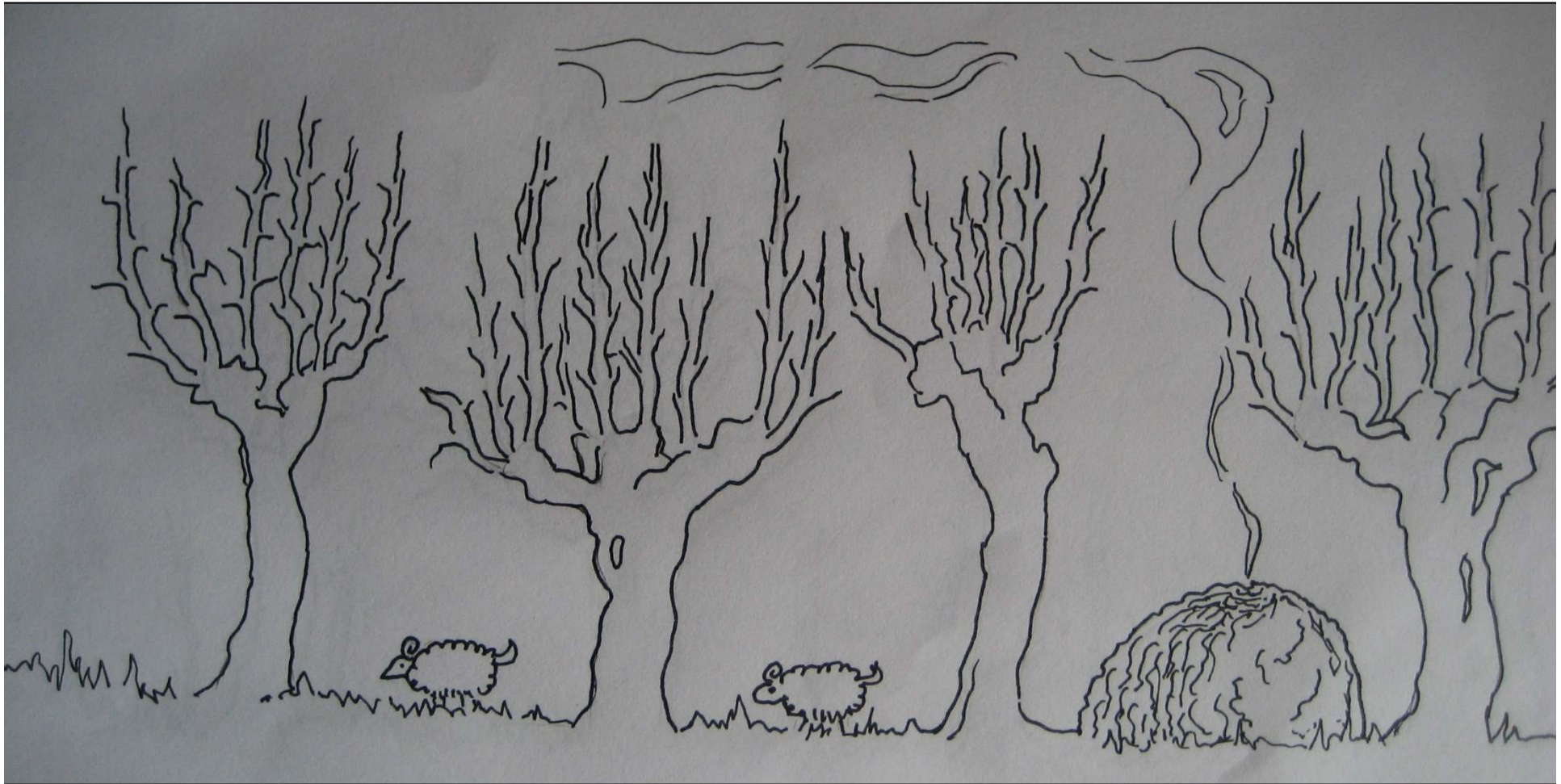
A long history of anthropogenic use ...



Coppice system,
Pollard system,
Charcoal making,
Logging for timber,
grazing...



... this had a strong human footprint on the landscape



Until beginning of XX century: big surfaces of **open forests with pollards** (cattle grazing & charcoal making).

Logging. Negative selection system during the first half of twentieth century





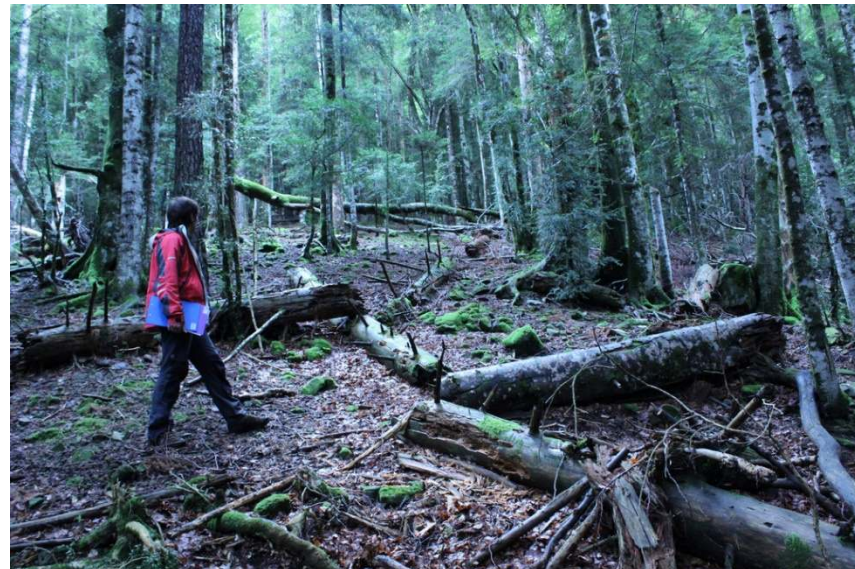
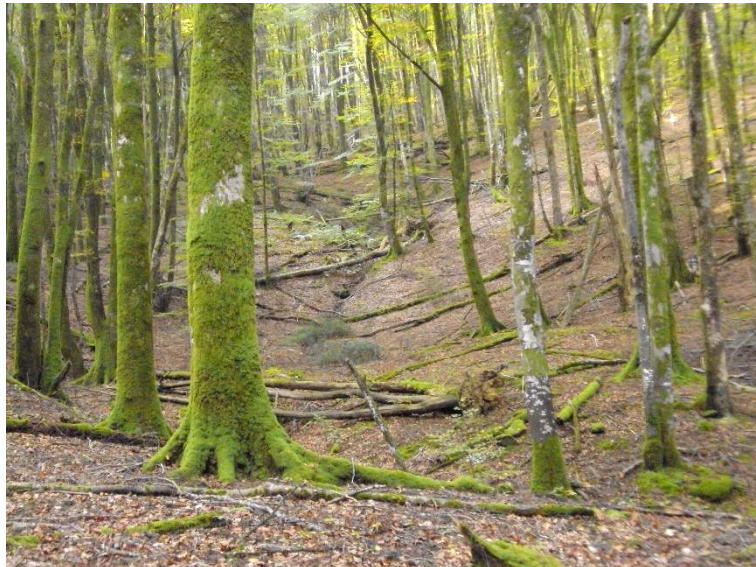
99,99% of spanish forests
have been exploited in any
time of the History



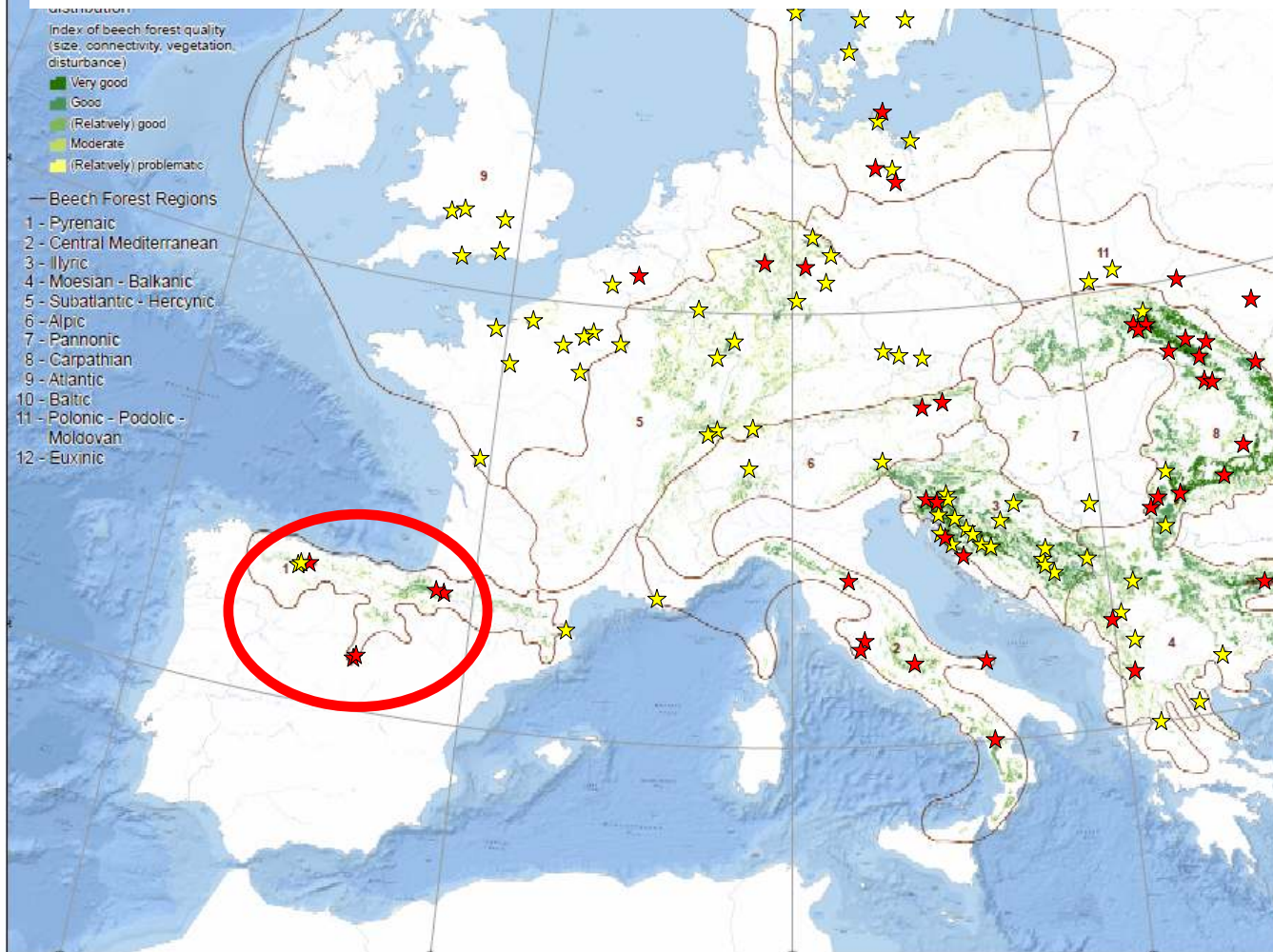
2.- Some examples of networking at different spatial level

Different initiatives have been developed in last years:

1. international
2. national
3. regional
4. local

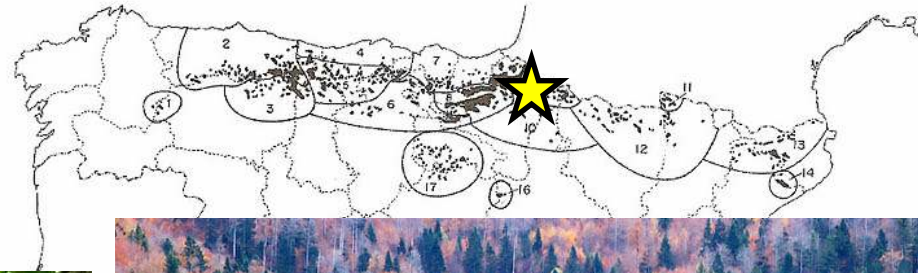


2.1.- An example at the International level: An old-growth beech forests network in Europe: a transnational serial nomination to the UNESCO World Heritage List



- 9 sites already declared before 2012.
- 2017: 33 new components through the different ecological areas for beech in Europe

WHL spanish component 1:
Hayedos de Navarra
(Aztaparreta & Lizardoia)



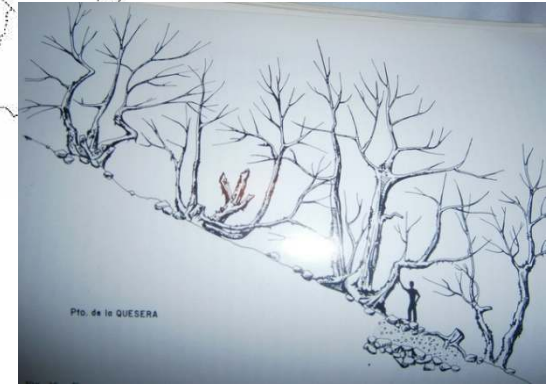
Buffer área: Irati forest

- In Pyrenees range
- Remnants never “touched”
- Natural dynamics
- Alpine bioregión: cold climate, mixed beech - fir forest





WHL spanish component nr. 3:
Hayedos de Ayllón
(Montejo & Tejera Negra)



- Mediterranean bioregion: influence of drought and frost
- Ancient open Woodland with pollards, riparian beech forest and krummholz (tree-line near 2000 meter)

5.2.- At the National level: EUROPARC-Spain “Conservation Group”

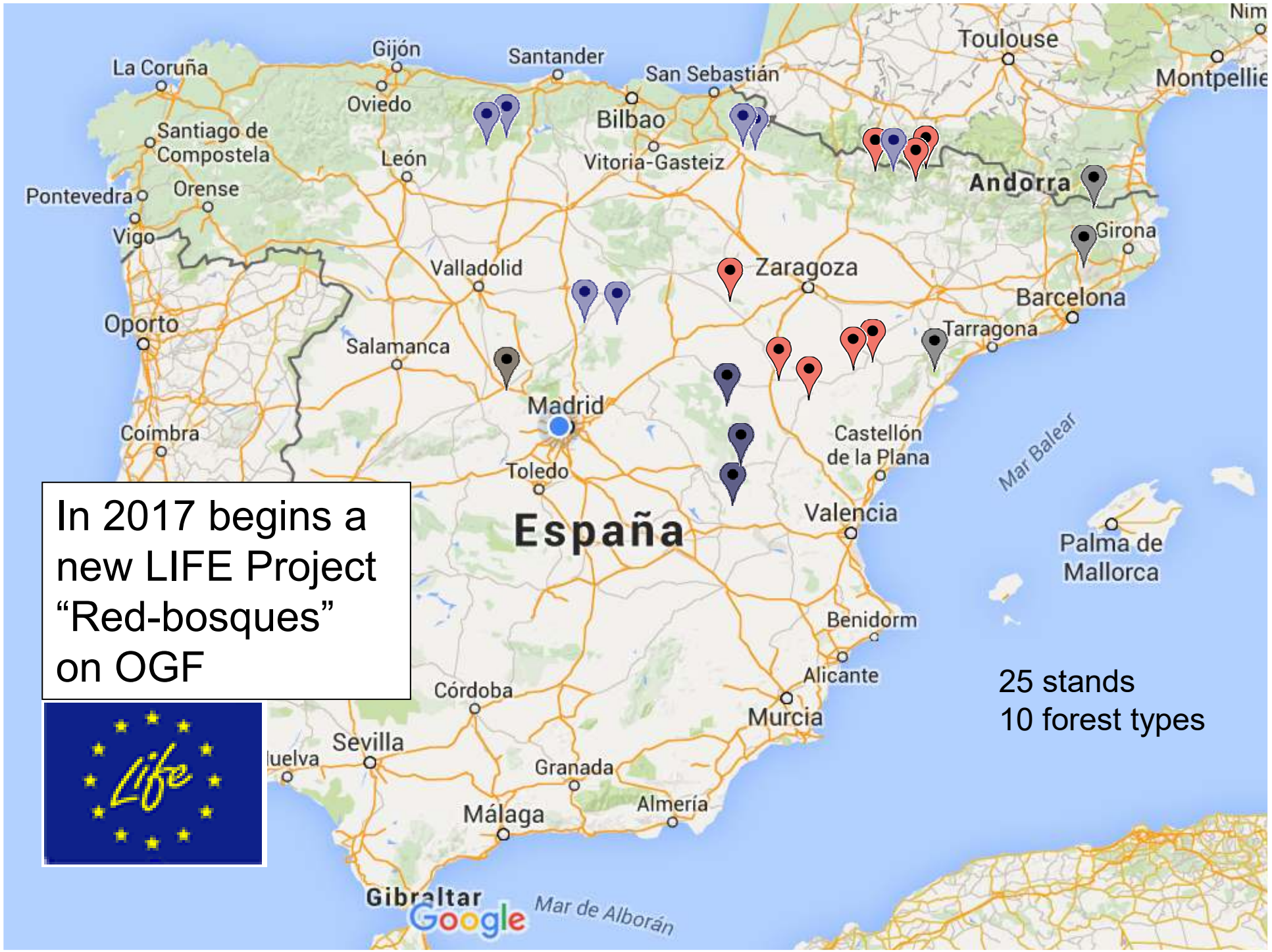
Networking, exchange of expertise

Access to information and best practices

Development of standards

Monitoring and evaluation





In 2017 begins a new LIFE Project "Red-bosques" on OGF



25 stands
10 forest types

5.3.- At the Regional level: Aragón network of reference old-growth stands

Main goals

- 1.- To develop a methodology for identification and characterization of OGF stands
- 2.- To select simple and effective indicators (measurable and comparable)
- 3.- Continuous monitoring of changes





Quercus faginea stand



Pinus uncinata stand



Juniperus thurifera stand



Pinus halepensis stand



Pinus nigra salzmanii stand



Pinus pinaster stand

Some examples of the reference OGF stands in the Aragón network (in the Mediterranean Bio-Region)

5.4.- At the Local level: Montseny Natural Park network of old-growth stands



A mountain landscape near the Mediterranean sea with a high diversity of forests



Some examples of old-growth stands:



Quercus ilex stand



Abies alba stand



Alluvial stand



Ancient
Castanea sativa
stand

6.- SOME CONCLUSIONS

A) On research:

- 1,- In last years we are doing first steps to locate and protect our last (little) OGF remnants
- 2,- We also need to select and protect the best places to be secondary OGF in the future



B) On “management”:

- 3,- Search on natural dynamics, structural complexity, quality of hábitat (for specific species) & vulnerability of the ecosystem
- 4,- Better protection of old-growth remnants, coordination and networking is needed.



Thank you very
much for your
attention

Merci beaucoup

